

SHAGIRA



1932

Faculty



NETTIE B. BAYLEY

A. B., University of Washington
A. M., University of Washington

DR. G. E. LOFTFIELD

E. S., Valparaiso University
A. B., A. M., University of Wash.
Ph. D., University of Washington

MARY G. THOMPSON

B. A., Grinnell College
M. A., University of Washington

RUTH LAWSON

A. B., Willamette University
M. A., University of Washington

HAZEL NESBITT

B. A., Carlton College
M. A., University of Washington

HARRIET M. PUGSLEY

B. A., University of Washington
M. A., University of Washington

LAWRENCE JACKY

Washington State College
B. A., Economics, Service, History

LENORE C. SMITH

B. S., University of Washington



MAURICE WINDUS

B. S., Washington State College

MINNIE GERRIETS

B. S., Washington State College

MARGARET DORRANCE

B. A., University of Washington

W. C. LIPPERT

Montana State College
B. S., Agricultural Education
Advance Work at U. of W.



EN

HAROLD H. LANG

E. S., Montana State College
M. S., University of Washington

Harold H. Lang



LAURA ANGST

B. A., M. S., U. of W.



NANCY G. CARROLL

Ph. B., University of Iowa



Nancy G. Carroll

W. C. MOORE

B. S., Oregon State College

DANA R. LINCOLN

Manual Arts, Wash. State College



B. M. Cornwall

KATHRYN B. McCORMACK

A. B., University of Idaho

Dorothy B. Wells

A. B., University of Washington



Peter J. Goldens

PETER T. FOLDEN

B. A., University of Washington

P. T. Folden



ESTHER HALL

B. A., University of Washington

JOHN H. KOLKANA

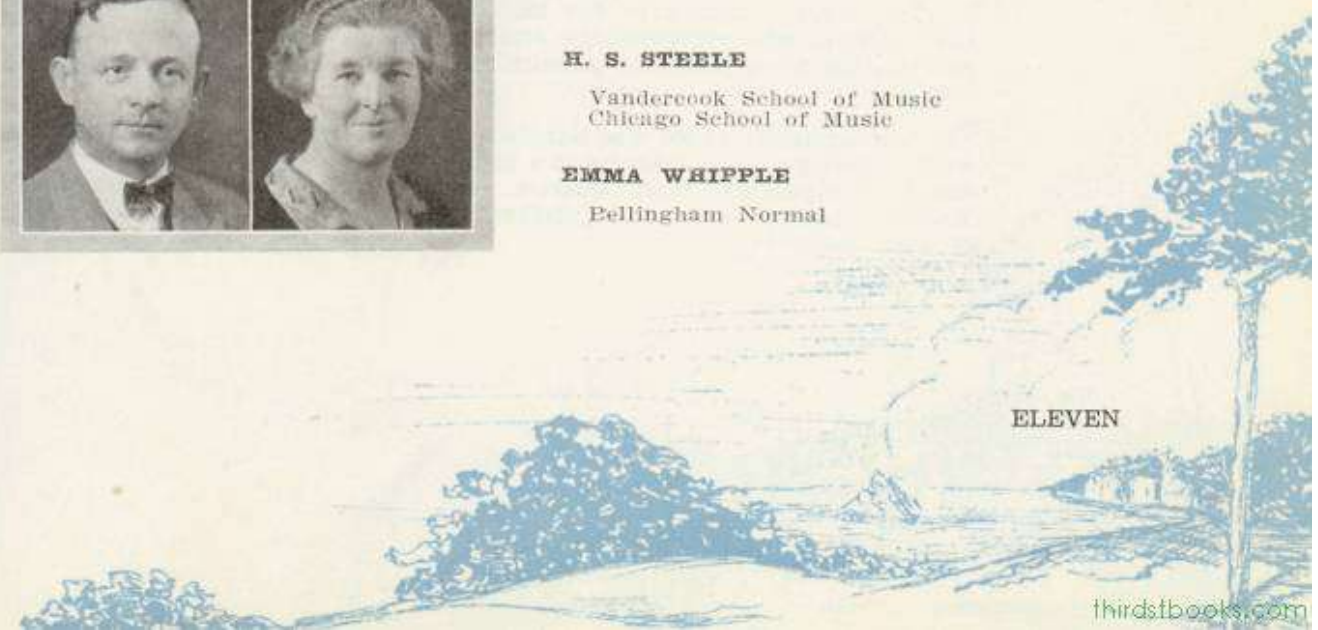
B. S., Oregon State College

H. S. STEELE

Vandercook School of Music
Chicago School of Music

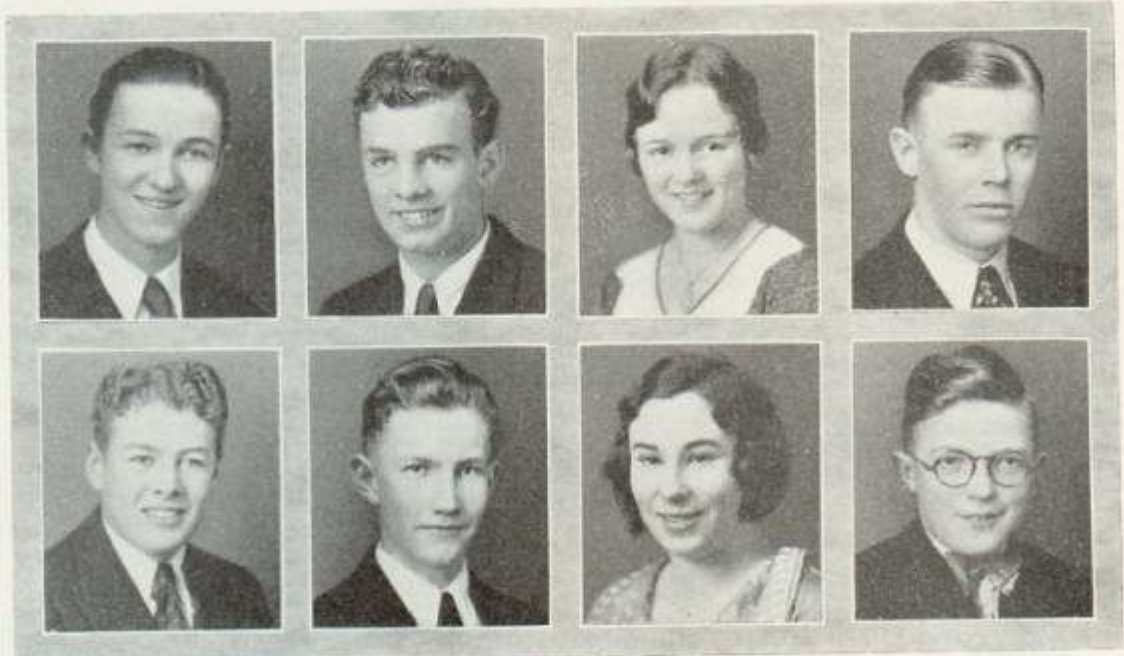
EMMA WHIPPLE

Bellingham Normal



Student Council

Raymond Light



PRESIDENT	- - - -	AARON LIGHT
VICE-PRESIDENT	- - - -	RUSSELL AXELSON
SECRETARY	- - - -	IOLA STEELE
TREASURER	- - - -	ROY SOLLIE
SENIOR REPRESENTATIVE	- - - -	RONALD DODDS
JUNIOR REPRESENTATIVE	- - - -	EDWIN BURKLAND
SOPHOMORE REPRESENTATIVE	- - - -	FRANCES HALL
FROSH. REPRESENTATIVE	- - - -	CHARLES BOYD
FACULTY	- - - -	MR. FOLDEN
PRINCIPAL	- - - -	J. A. REEVES
COACH	- - - -	MR. JACKY

STUDENT COUNCIL

The student council of our high school is made up of the student body officers who represent the students in the lesser businesses of administering along with the principal, a faculty member, and an athletic coach.

Approximately \$4,000 was handled by this council in the past year as well as their granting insignias to a number of new organizations, including School Publications, Boys' Quartet, Girls' Sextette, and Stock Judging Teams, if proper rules and regulations can be drawn up for the awarding of these insignias.





Senior Class Officers

- President - - - - - Maurice Hedlund
- Vice President - - - - - Allen Windus
- Secretary - - - - - Jane Brotherton
- Treasurer - - - - - Margaret Hammer

ADVISORS

- Miss Kathryn McCormack
- Mr. William Lippert

MOTTO

"Faith in the Future"

COLORS

Crimson and White

FLOWER

Red Carnation

COMMENCEMENT SPEAKERS

- Valedictorian - - - - - Iola Steele
- Salutatorian - - - - - Mildred Nailor

Little George Washington Truths About the Mighty Seniors

Lest many an underclassman go mind-hungry for the true facts concerning the historical lives of some of our lofty Seniors, let us set forth herewith enlightening events in the lives of these pedestaled creatures in valiant hope that the lesser beings of this school may pattern themselves accordingly.

How many an underclassman knows that:

Bob Soine, upon espying a mouse screams feebly and seeks the safe height of a chair.

Norma Sater, in 1902, was awarded the tin gilded mustache loving cup for being hog-calling champion of Conway.

Melvin Halgren's big ambition is to be "The Man of the Iron Constitution" accomplishing this feat by eating, daily, kegs of nails.

Dick Watson is the Sousa of the West, his drum solos being perfection.

Dorothy Vaughan, strong Anti-Saloon reformer, condemns all vile persons who go out more than seven nights a week.

Allan Windus is the Emily Post of the masculine gender.

Lloyd Lovaas' most fascinating sport is daintily clipping paper dollies.

Jim Gilmore once said, "Ah, what a man could with curly hair and my dimples." Woolworth's upon this day sold one curling iron.

Maurice Hedlund, rowdy cut-up, aspires to be a pugilist second to not even Tunney.

Mastermind Cliff Lind is working on an invention which he guarantees will wipe out all over-production and unemployment. This miracle is an all day sucker made of Paris Green and sulphuric acid. (Patent Pending).

Marg Hammer was told she was politically inclined. Marg is in a fever of worryment for she can't decide what dress to wear at the first White House reception.

Ed Davis would give twenty years of his life to be able to throw spit wads as well as Iola Steele.

Ronnie Dodds, noted scientist, will spend the rest of his life in deep research trying to discover why his hands should have smarted so when he used nitric acid as hand lotion.

Ralph Benjamin says: "Cut school taxes by the elimination of teachers. Also book. Well, on second thought eliminate schools."

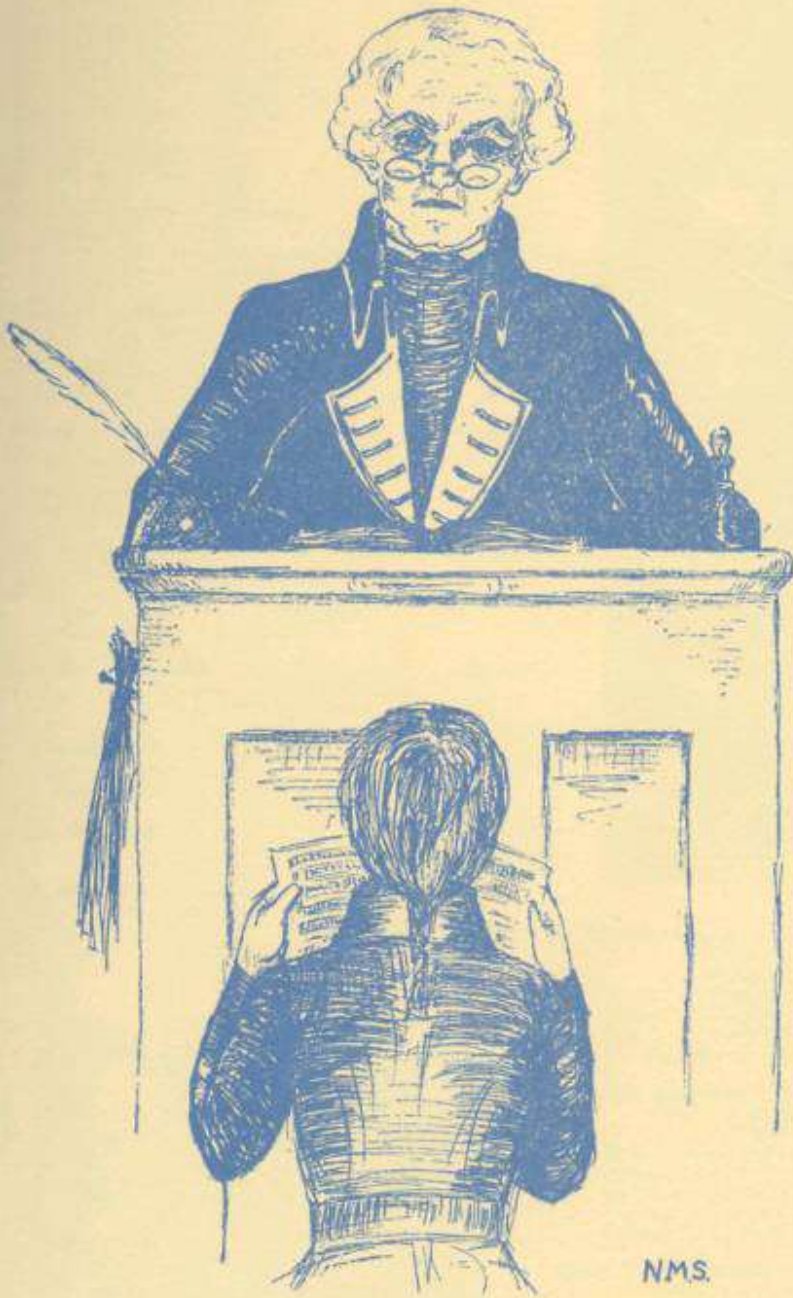
To obtain Greta Garbo's low, mysterious, growling voice Freda Berger diets chiefly on dog biscuits.

A sure way to reduce, according to Mildred Hanson, is to diet on Lindberger cheese and skunk cabbage. Most success is gained by putting two miles between these edibles and yourself.

The person who blushes and stammers and acts shy in general when she is approached is Ruthie Anderson.

This poor humble authoress had told nary a lie until she wrote this.

E. Y. '32.



Classes

Margaret S. Hooker

Lucy Abbott "Lou"
 "The girl who has found life full of
 interest has found herself."
STENOGRAPHIC
 Birthplace: Mount Vernon, Washington.
 Activities: Honor Society 2, 3; Folk Festival 1; Glee
 Club 4; G. A. A. 4; Soccer 4; Torch Society 4.

Gerald Abts "Abie"
 "The mould of a man's fortune
 is in his own hands."
ENGLISH
 Birthplace: Sioux City, Iowa.

Edward Abbott "Ed"
 "Man should press forward in fame's glorious chase."
AGRICULTURE
 Birthplace: Fredonia, Washington.
 Activities: F. F. A. 2, 3, 4; Glee Club 3, 4; Wind-
 jammers 4; Agriculture Representative to Pullman 3;
 Advertising for a Husband 4; Miss Somebody Else 4.

Eleanor Aemmer "El"
 "Only so much do I know, as I have lived."
STENOGRAPHIC
 Birthplace: Mount Vernon, Washington.
 Activities: G. A. A. 2, 3, 4; Girls' "Green "M" 4.

Marie Allenbach "Angel"
 "Eyes of an unholy blue."
ENGLISH
 Birthplace: Mount Vernon, Washington.
 Activities: Latin Club 2, 3; Spanish Club 3, 4.

Antone Anderson "Tony"
 "Man should be ever better than he seems."
VOCATIONAL
 Birthplace: Mount Vernon, Washington.
 Activities: Second Team Football 3, 4.

Donald Anderson "Don"
 "The happiest hours I ever spent
 were spent among the lassies, oh!"
SCIENTIFIC
 Birthplace: Avon, Washington.
 Activities: Honor Society 2, 3; Glee Club 2, 3, 4;
 Windjammers 4; Duke of Volendam 4.

June Allquist "Junie"
 "As merry as the day is long."
HOME ECONOMICS
 Birthplace: Mount Vernon, Washington.
 Activities: Miss Somebody Else 4; G. A. A. 2, 3, 4;
 Pirates of Penzance 3; U. of W. Playday Delegate 1,
 2, 3; Girls' Glee Club 3, 4; Folk Festival



Ruth Elizabeth Anderson "Cookie"
 "One heart, one way."
STENOGRAPHIC
 Birthplace: Burlington, Washington.
 Activities: Entered from Sedro-Woolley 1929; Girls' Glee
 Club 2, 4; Patriot Girl 4; U. of W. Playday Delegate
 4; Spix Gang 4; Girls' Sextette 4.

Russell Axelson "Bus"
 "Let us do what honor demands."
AGRICULTURAL
 Birthplace: Mount Vernon, Washington.
 Activities: Track 2, 3, 4; Football 3, 4; Vice Presi-
 dent Student Body 4; President Boys' Green "M" 4;
 President of Boys' Green "M" 4; Fire Chief 4;
 Delegate to U. of W. Conference 4.

Clair Baumgardner "Bum"
 "Everone is architect of his own fortune."
COMMERCIAL
 Birthplace: Troy, South Dakota.
 Activities: Entered from Seranburg, South Dakota
 1931; Baseball 4.

Nina Louise Beecher "Curly"
 "Men may come, and men may go, but I go on forever."
STENOGRAPHIC
 Birthplace: Washburn, Illinois.
 Activities: Girls' Sextette 4; Golden Trail 2; Lass of
 Limerick Town 1; Duke of Volendam 4; Girls' Green
 "M" 3, 4; Honor Society 2, 3; Torch Society 4;
 Annual Staff 4; U. of W. Playday Delegate 1.

Ruth





James Beatty "Jim"

"I never dare to be as funny as I can."

MANUAL ARTS

Birthplace: Mount Vernon, Washington.
Activities: Football 3, 4; Basketball 4; Track 3, 4;
Baseball 1, 2, 3, 4.

Freda Berger "Freda"

"She was born slow of movement and slow of speech."

ENGLISH

Birthplace: Mount Vernon, Washing on.
Activities: Girls' Glee Club 1, 2, 3, 4; Debate Club 3,
4; Secretary of Debate Club 4; Heel and Toe 2, 3,
4; Spanish Club 3, 4; Bulldog Staff 4; Annual Staff
4; G.A.A. 2, 3, 4; Honor Society 2, 3; Torch Society 1.

Eloise Bernhoft "Liss"

"Good nature and good sense must ever join."

ENGLISH

Birthplace: Tacoma, Washington.
Activities: Orchestra 1, 2, 3, 4; Orchestra Contest 2,
3; Girls' Glee Club 3, 4; Operettas 3, 4; U. of W.
Playday 4; G. A. A. 2, 3, 4; Girls Green "M" 4.

John Begg, Jr. "John"

"If he should fall, he is reckoned in song."

SCIENTIFIC

Birthplace: Mount Vernon, Washington.
Activities: Boys' Glee Club; Golf Team 3; Latin Club 4.

Ralph Benjamin "Mangy"

"He who is firm in will, moulds the world to himself."

AGRICULTURAL

Birthplace: Mount Vernon, Washington.
Activities: Boys' Glee Club 3, 4; Annual Staff 4.

Jane Brotherton "Bebe"

"She's lovely she's divine!"

ENGLISH

Birthplace: Bozeman, Montana.
Activities: Wonder Hat 3; Martha by the Bay 2; Miss
3; Duke of Volendam 4; Girls' Sextette 3, 4; G. A. A.
1, 2, 3, 4; Debate Club; Annual Staff 3; U. of W.
Playday 1, 2, 3; Torch Society 4; Honor Society 2,
3; Tennis Manager 3; Sec. Student Body 3; Presi-
dent of Windjammers 4.

Elizabeth Caulkins "Caulky"

"The most completely lost of all days is that
on which one has not laughed."

ENGLISH

Birthplace: San Francisco, California.
Activities: G. A. A. 2, 3, 4; President Honor Society 3;
President Girls' Club 4; Dramatics Club 4; U. of W.
Playday 2, 3; U. of W. Hi-leader's Conference 3, 4.

Ben Benson "Goldy"

"He pleases others, but he cannot please himself"

SCIENTIFIC

Birthplace: North Bend, Washington.
Activities: Honor Society 2, 3; Boys' Green "M" 2, 3,
4; Baseball 2, 3, 4.

Julius Bloom "Julius"

"Presents at once! That's good!"

COMMERCIAL

Birthplace: Minneapolis, Minnesota.
Activities: Football 3, 4; Track 4; Boys' Green "M" 4.

Flora Chase "Florie"

"Her face betokens all things good."

HOME ECONOMICS

Birthplace: Saskatchewan, Canada.
Activities: Honor Society 2.

Anna Louise Christianson "Annie"

"I think it better to have two strings to my bow."

ENGLISH

Birthplace: Seattle, Washington.
Activities: Girls' Glee Club 1, 2, 3, 4; Secretary of
Class 3; U. of W. Playday 1; Lass of Limerick Town
1; Duke of Volendam 4; Miss Somebody Else 4;
Debate Club 2; Heel and Toe 2; Senior Vodyll 1;
Folk Festival 1; Latin Club 4; Spanish Club 3, 4;
Dramatics Club 4.

David Boyes "Bud"

"The worst of me is known, and I can say I
am better than the fame I bear."

MANUAL ARTS

Birthplace: Colby, Washington.
Activities: Boys' Glee Club 1, 2, 3, 4; Golden Trail 2;
Pirates of Penzance 3; The "Duke" in the Duke of
Volendam 4; Football 4; Boys' Green "M" 4; Basket-
ball Manager 4; Dramatics Club 4; Class Yell Leader
and All-School Leader 3; Fireman 4.



- Walter Cash** "Walt"
 "By outward show, let's not be cheated."
 SCIENTIFIC
 Birthplace: Fallon, Nevada.
- Ruth Church** "Churchie"
 "Black brows, they, become some women best."
 HOME ECONOMICS
 Birthplace: Mount Vernon, Washington.
- Florence Clair** "Flossie"
 "Her ways are ways of pleasantness."
 STENOGRAPHIC
 Birthplace: Mount Vernon, Washington.
 Activities: Debate Club.
- Lloyd Clevenger** "Shorty"
 "I have seen better faces in my time."
 MANUAL ARTS
 Birthplace: Mount Vernon, Washington.
 Activities: Baseball 2, 3; Football 3, 4; Track 2, 3, 4;
 Boys' Green "M" 2, 3, 4; Class Athletic Manager 3, 4.
- Louis Cummings** "Louis"
 "Each morning sees some task begun;
 Each evening sees its close."
 MANUAL ARTS
 Birthplace: New Castle, Wyoming.
 Activities: Band 2, 3, 4.
- Rowena Curry** "Weny"
 "A face with gladness overspread."
 GENERAL BUSINESS
 Birthplace:
 Activities: Entered from Everett 1931; Girls' Glee Club
 4; Torch Society 4; Spix Gang 4; Duke of Volendam 4.
- Doris Margaret Dingleline** "Dingle"
 "As frank as rain on cherry blossoms."
 STENOGRAPHIC
 Birthplace: Portland, Oregon.
 Activities: Entered from Olympia, Washington 1930;
 Editor of Bulldog 4; Bulldog Staff 3; Make-Up Editor
 of Annual 4; U. of W. Conference 4; Secretary-
 Treasurer G. A. A. 4; Girls' Green "M" 4; Basketball
 3, 4; Soccer 4; Quill and Scroll 3, 4; Spix Gang 4.
- Leonard L. Derr** "Jack"
 "Comb down his hair, Look! Look! It stands upright!"
 MANUAL ARTS
 Birthplace: Valier, Montana.
 Activities: Football 4; Bulldog Staff 4; Boys' Green
 "M" 4; Junior Manual Training Award; Glee Club 1,
 2; Second Team Football 2, 3; Fireman 4.



- Ronald Dodds** "Bonnie"
 "I thought upon one pair of English legs
 did march three Frenchmen."
 ENGLISH
 Birthplace: London, England.
 Activities: Tennis Team 3, 4; French Club 3, 4; Boys'
 Green "M" 3, 4; President Debate Club 4; Student
 Council 4; President Spanish Club 3; Vice President
 Honor Society 3; Annual Staff 3, 4; Golf Team 3.
- Thelma Edwards** "Thel"
 "The gentle mind by gentle deeds is known"
 SCIENTIFIC
 Birthplace: St. George, Kansas.
 Entered from Selah, Washington, in 1931.
- Edith Eliason** "Ede"
 "Neither rash nor timid."
 STENOGRAPHIC
 Birthplace: Mount Vernon, Washington.
 Activities: Girls' Glee Club 4.
- Eugene Galyean** "Beans"
 "Fain would I climb, yet fear I to fall."
 MANUAL ARTS
 Birthplace: Mount Vernon, Washington.
 Activities: Boys' Glee Club 1, 2, 3; Lass of Limerick
 Town 1; Golden Trail 2; Midget Basketball 1, 2.



Olive Ellestad "Jimmie"
 "Strike an even balance in all things."
STENOGRAPHIC
 Birthplace: Duan Center, North Dakota.
 Activities: G. A. A. 4; Soccer 4; Duke of Volendam 4.

Maizie Gilbert "Maizie"
 "A girl without modesty is like a ship
 without a rudder."
HOME ECONOMICS
 Birthplace: Kingman, Kansas.
 Activities: Honor Society 2; Latin Club 3.

James Gillmore "Jimmie"
 "A jester; a bad character."
SCIENTIFIC
 Birthplace: Anacortes, Washington.
 Activities: Boys' Glee Club 1, 2, 3, 4; Tennis Team 2, 3, 4; Honor Society 2, 3; Annual Staff 3; Class President 3; Boys' Green "M" 2, 3, 4; Operettes 1, 2, 3, 4; Torch Society 4; Vice Pres. Windjammers 4; Miss Somebody Else 4; Yell King 4.

Helga Engen "Holga"
 "Prepared in mind and resources."
COMMERCIAL
 Birthplace: Milltown, Washington.
 Activities: Honor Society 2, 3; Torch Society 4.

Willadee Falkner "Wildee"
 "Her motto is: Live and Learn."
HOME ECONOMICS
 Birthplace: Monroe, Washington.
 Activities: G. A. A. 1, 2, 3, 4.

Melvin Halgren "Mel"
 "The cover of a book is not a good
 index to its contents."
COMMERCIAL
 Birthplace: Seattle, Washington.
 Activities: Basketball 1, 2, 3; Baseball 3, 4.

Paul Hamburg "Red"
 "Thou hast a grim appearance."
GENERAL BUSINESS
 Birthplace: Mount Vernon, Washington.
 Activities: Football 3, 4; Boys' Green "M" 3, 4; Vice President of Boys' Club 4.

Floyd Gidlund "Gid"
 "Victory follows me, and all things
 follow victory."
MANUAL ARTS
 Birthplace: Mount Vernon, Washington.
 Activities: Football 2, 3, 4; Basketball 3, 4; Baseball 2, 3; Track 4; Boys' Green "M" 2, 3, 4.

Francis Greenup "Franse"
 "There is no better time to start than today."
GENERAL BUSINESS
 Birthplace: Bremerton, Washington.
 Activities: Chorus 1; Folk Festival 2; Lelewala 1; Girls' Glee Club 3, 4; Secretary of Latin Club 3; Girls' Suxette 3; G. A. A. 1; French Club 3; Spix Gang 4; Duke of Volendam 4.

Ivar Hanson "Hanson"
 "Honestly rather than brilliantly."
AGRICULTURAL
 Birthplace: Mount Vernon, Washington.
 Activities: Baseball 2, 4; Future Farmers; Secretary of Future Farmers 4; Football 3, 4; Track 3, 4; Potato Judging Team 3, 4; Sophomore Class Play.

Ray Hart, Jr "Victor"
 "Mathew, Mark, Luke, and John,
 the bed be blest that I Le on."
SCIENTIFIC
 Birthplace: Watertown, South Dakota.
 Activities: Boys' Glee Club 1, 2, 3, 4; Lass of Lamerick Town; Golden Trail 2; Pirates of Penzance 3; Football 3, 4; Spanish Club 3, 4; Tennis Club 1; Dramatics Club 4; Rich Man, Poor Man 3.

Lois Guiler "Gui"
 "Be good, sweet maid, and let who will be clever."
STENOGRAPHIC
 Birthplace: Aron, Washington.
 Activities: Honor Society 2, 3; Torch Society 4; Girls' Glee Club 4.



Emily Hall "Emmy Lou"
 "The mildest manner and the gentlest heart."
 ENGLISH
 Birthplace: Sumas, Washington.
 Activities: Tennis Team 1, 2, 3, 4; Girls' Glee Club 1, 2, 3, 4; Operettes 1, 2, 3, 4; Girls' Green "M" 3, 4; G. A. A. 1, 2, 3, 4.

Maurice Hedlund "Teach"
 "His heart as far from fraud as heaven from earth."
 AGRICULTURAL
 Birthplace: Mount Vernon, Washington.
 Activities: President of Class 4; Delegate to Pullman 3; Secretary F. F. A. 3; Pirates of Penzance 3; Boys' Quartet 4; Student Council 3; Honor Society 2, 3; Tech Society 4; Potato Judging 4; State Secretary of Future Farmers 3, 4.

Theodore Hildebrand "Ted"
 "Why doth one man's yawning make another yawn?"
 GENERAL BUSINESS
 Birthplace: Mount Vernon, Washington.
 Activities: Glee Club 1, 2, 3, 4; Band and Orchestra 1, 2, 3, 4; Operettes 1, 2, 3, 4; Case of Spoons 4; Miss Somebody Else 4.

Margaret Hammer "Marge"
 "I've met love a-smiling...for love's in my heart."
 ENGLISH
 Birthplace: Mount Vernon, Washington.
 Activities: Advertising for a Husband 4; Operettes 1, 2, 3, 4; Library Club 3; Folk Festival 1; Baseball 2, 3; Girls' Glee Club 1, 2, 3, 4; G. A. A. 1, 2, 3, 4; Class Treasurer 3, 4; Secretary Windjammers 4; Honor Society 2, 3; V. P. Torch Society 4; U. of W. Playday 4.

Edith Hanson "Ede"
 "She is altogether right."
 HOME ECONOMICS
 Birthplace: Avon, Washington.

Vernon Jewett "Kelly"
 "Man should be ever better than he seems."
 MANUAL ARTS
 Birthplace: Mount Vernon, Washington.
 Graduated Mid-Year.

Carl Johnson "Kale"
 "The man that blushes is not quite a brute."
 AGRICULTURAL
 Birthplace: Brookline, Massachusetts.
 Activities: Future Farmers.



Grace Elizabeth Hastie "Snooky"
 "Ability without industry is lost."
 HOME ECONOMICS
 Birthplace: Mount Vernon, Washington.
 Activities: Hockey 1; Archery 1, 2, 3; Folk Festival 1; G. A. A. 2, 3; Windjammers 4; Dramatics 4.

Vincent Johnson "Vince"
 "We Swedes fear law, but nothing else in the world."
 AGRICULTURAL
 Birthplace: Mount Vernon, Washington.
 Activities: Future Farmers 2, 3, 4.

Aaron Dee Light "Prexy"
 "If you would be a man, speak what you think."
 MANUAL ARTS
 Birthplace: Mount Vernon, Washington.
 Activities: Boys' Glee Club 1, 2, 3, 4; Operettes 1, 2, 3, 4; Boys' Quartet 3, 4; Wonder Hat 3; Windjammers 4; President Associated Student Body 4; Honor Society 2, 3; Torch Society 4.

Edith Hawkins "Hawky"
 "She who knows and knows that she knows, follow her."
 ENGLISH
 Birthplace: Blaine, Washington.
 Activities: Rose Maiden 1; Senior Vodril 1; Rich Man, Poor Man 3; Captain Applejack 1; Miss Somebody Else 3; Girls' Sextette 3, 4; Folk Festival 1; G. A. A. 1, 2, 3, 4; Operettes 1, 2, 3, 4; Debate Club; Windjammers 4; Annual Staff 3; U. of W. Playday 1, 2, 3; Torch Society 4; Honor Society 2, 3; Secretary Girls' Green "M" 4; Advertising for a Husband 4.





Lloyd

Virginia Hopkins "Jin"
"The way to have a friend is to be one."

ENGLISH
Birthplace: Stanwood, Washington.
Activities: Spanish Club 3, 4; Secretary of Spanish Club 4; Girls' Chorus 1; Rose Maiden 1.

Clifford Lind "Cliff"
"Clarity and brevity fit in here."

SCIENTIFIC
Birthplace: Mount Vernon, Washington.
Activities: Football 4; Boys' Green "M" 4; French Club 3, 4.

Lloyd Lovaas "Speed"
"I awoke one morning and found myself famous."

MANUAL ARTS
Birthplace: Cumberland, Wisconsin.
Activities: Basketball 1, 2, 3, 4; Football 4; Track 4; Boys' Green "M" 4; Assis'ant Manager of Athletics 2.

Evelyn Lucile Husby "Evey"
"It does no good; so what's the use?"

HOME ECONOMICS
Birthplace: Mount Vernon, Washington.
Activities: Basketball 1, 2; Baseball 1, 2; Volley Ball 2; Soccer 4; Captain Ball 2; Re-entered from Port Angeles 1931; Girls' Athletic Manager 2; Girls' Green "M" 2, 4; Girls' Glee Club 4; Secretary-Treasurer of Green "M" 4; U. of W. Playday 4; Folk Festival 1.

Mary Helen Jackson "Shorty"
"We can trust your kindness."

Graduated Mid-Year.

William Meade "Bill"
"I am here; here I remain."

GENERAL BUSINESS
Birthplace: Glover Port, Montana.

Harold Millard "Professor"
"The glass of fashion and the mold of form."

GENERAL BUSINESS
Birthplace: Mount Vernon, Washington.
Activities: Boys' Glee Club 2, 3, 4; Track 3, 4; Boys' Green "M" 3, 4; Pirates of Penzance 3; Golden Trail 2; Representative to U. of W. Conference 3; Duke of Volendam 4; Business Manager of Bulldog 2.

Evelyn Jackson "Jacky"
"She's a bonny wee thing."

STENOGRAPHIC
Birthplace: Centerton, Arkansas.

Letha Jenkins "Toots"
"She is a woman, therefore may be won."

STENOGRAPHIC
Birthplace: Colfax, Washington.
Activities: Entered from Colfax 3; Girls' Glee Club 3, 4; Honor Society 3; Torch Society 4; French Club 3; Annual Staff 4.

Roger Moss "Micky Moss"
"He does, indeed, show some sparks that are like wit."

SCIENTIFIC
Birthplace: Seattle, Washington.
Activities: Boys' Glee Club 1, 2, 3, 4; Boys' Quartet 4; Honor Society 2, 3; Torch Society 4; Lass of Limerick Town 1; Pirates of Penzance 3; Duke of Volendam 4; Tennis Club 1; President of Latin Club 3; Camera Club 4.

George Moore "Shiek"
"On their own merits modest men are dumb."

SCIENTIFIC
Birthplace: Eugene, Oregon.
Activities: Boys' Glee Club 2, 4; Golden Trail 2; Duke Volendam 4; Tennis Club 1.

Bonnibelle LaFond "Bonny"
"Neither above or below her own business."

HOME ECONOMICS
Birthplace: Mount Vernon, Washington.
Activities: Heel and Toe 1; Spring Festival 1; G. A. A. 1, 2; Duke of Volendam 4.



Marie Mattson "Matt"

"The most important part of every business is to know what ought to be done."

HOME ECONOMICS

Birthplace: Mount Vernon, Washington.
 Activities: Girls' Glee Club 2, 3, 4; Girls' Chorus 2, 3; Latin Club 3, 4; The Golden Trail 2; Pirates of Penzance 3; Hiawatha 2; G. A. A. 1.

Francis Nelson "Swede"

"It is sometimes expedient to forget what you know."

MANUAL ARTS

Birthplace: Mount Vernon, Washington.

Dorothy Merritt "Dody"

"Gentle in manner; firm in reality."

HOME ECONOMICS

Birthplace: Big Lake, Washington.
 Activities: Folk Festival 1; Heel and Toe 1, 2; Golden Trail 2; Orchestra 2, 3, 4; Pirates of Penzance 3; Latin Club 4; Student Leader Orchestra 4; Violin Ensemble for Duke of Volendam 4.

Allen Windus "Windy"

"If fame comes after death, I am in no hurry for it."

SCIENTIFIC

Birthplace: Pullman, Washington.
 Activities: Band 1, 2, 3, 4; Orchestra 2, 3; Tennis 2, 3, 4; Boys' Green "M" 2, 3, 4; V. P. Class 4.

James Olson "Jim"

"To be strong is to be happy."

VOCATIONAL

Birthplace: Mount Vernon, Washington.
 Activities: Football 2, 3, 4; Basketball Second Team 2, 3; Boys' Green "M" 2, 3, 4; Basketball Team 4.

Gladys Monismith "Glad"

"Grace moves in all her steps."

ENGLISH

Birthplace: Richvale, California.
 Activities: Operettes 1, 2, 3, 4; Rich Man, Poor Man 3; President Spanish Club; U. of W. Playday 2, 3; Girls' Sextette 3, 4; Girls' Glee Club 1, 2, 3, 4.

Viola Mae McMoran "Vi"

"Diversity, that is my motto."

STENOGRAPHIC

Birthplace: Chester, Oklahoma.
 Activities: Honor Society 2, 3; Torch Society 4; Girls' Glee Club 3, 4; Spix Gang 4; Rich Man, Poor Man 3; Pirates of Penzance 3; Annual Staff 4.

Alroy Olson "Cotton"

"I am not what I once was."

AGRICULTURAL

Birthplace: Mount Vernon, Washington.
 Activities: Football 4; Basketball 4; Boys' Green "M" 4.



Handwritten signature or name in cursive script, possibly 'Dorothy Merritt'.



Mildred Nailor "Mill Nail"

"To see her is to love her."

ENGLISH

Birthplace: Everett, Washington.
 Activities: Folk Festival 1; Secretary of Class 1; Rose Maiden 1; Honor Society 2, 3; Torch Society 4; President of Torch Society 4; Secretary of Girls' Club 3; G. A. A. 1, 2, 3, 4; Tennis Manager 4; Girls' Glee Club 1, 2, 3, 4; Girls' Green "M" 2, 3, 4; Associate Editor Annual 3; Annual Editor 4; Spix Gang 4; Bulldog Staff 3, 4; Heel and Toe 2, 3, 4; U. of W. Hi-Leaders' Conference 3; Windjammers 4; Vice President Dramatics Club 4; Hiawatha 2; Salutatorian.

Esmond Partington "Ezzy"

"You come late, yet you come."

GENERAL BUSINESS

Birthplace: Coueur d'Alene, Idaho.
 Activities: Entered from Los Angeles 1930; Track 3, 4; Annual Staff 4; Camera Club 4; Debate Club 3, 4; Band 3.

David Purves "Purvie"

"His saying was: Live and let live."

MANUAL ARTS

Birthplace: Vancouver, B. C.

Alice Olson "Olie"

"A pleasing countenance is a silent commendation."

HOME ECONOMICS

Birthplace: Mount Vernon, Washington.
 Activities: Delegate Fairhaven Conference 3; Pasture Parade 3; G. A. A. Pres. 3; Girls' Green "M" 2, 3, 4.

Dorothy Olson "Third Street"
 "Be merry if you are wise."

STENOGRAPHIC
 Birthplace: Mount Vernon, Washington.
 Activities: Girls' Glee Club 3, 4; Spiz Gang 4.

Leland Peterson "P. J."
 "Believe one who has tried it."

GENERAL BUSINESS
 Birthplace: Moniborne, Washington.

Robert Soine "Bob"
 "How lovely he appears."

AGRICULTURAL
 Birthplace: Maynard, Minnesota.
 Activities: Boys' Green "M" 2, 3, 4; Basketball 1, 2, 3, 4; Future Farmers: Potato Judging Team 2; Track 4.

Merribel Olson "Merbel"
 "Thou speakest a word of great moment calmly."

HOME ECONOMICS
 Birthplace: Fir, Washington.
 Activities: A Patriot Girl 4; Vice President G. A. A. 4; U. of W. Playday 4; Girls' Athletic Manager 4.

Ruth Otterstedt "Ruthie"
 "If e'er she knew an evil thought,
 she spoke no evil word."

ENGLISH
 Birthplace: Mount Vernon, Washington.
 Activities: Honor Society 2, 3; Torch Society 4; Debate Club 4; Annual Staff 4.

Roy Sollie "Roy"
 "Setting raillery aside, let us
 attend to serious matters."

AGRICULTURAL
 Birthplace: Mount Vernon, Washington.
 Activities: Boys' Green "M" 4; Football 4; Treasurer of Student Body 4; Student Council 4; Agriculture Representative to Pullman 2.

Mylon Spahr "My"
 "Nor has he spent his life who
 has passed it in privacy."

AGRICULTURAL
 Birthplace: Bellingham, Washington.
 Activities: Entered from Fairhaven 1929.

Edna Poindexter "Eddy"
 "Short and sweet."

SCIENTIFIC
 Birthplace: Lyman, Washington.
 Activities: Folk Festival 1; Baseball 1, 2, 3, 4; Basketball 4; Honor Society 2, 3; Torch Society 4; Secretary Torch Society 4; Secretary of Girls' Club 4; Sec.-Treas. G. A. A. 3; Pres. G. A. A. 4; Playday Delegate to U. of W. 4.



Merribel Olson

Lolita Polet "Lo"
 "A perfect woman, nobly planned
 To warn, to comfort, and command."

ENGLISH
 Birthplace: Tacoma, Washington.
 Activities: Entered from Everett 4; President of Dramatics Club 4; G. A. A. 4; Spiz Gang 4; Annual Staff 4; Bulldog Staff 4; Miss Somebody Else 4; School Debate Team 4; Debate Club 4; Torch Society 4; A Patriot Girl 4; Camera Club 4; Windhammers 4.

Leonard Springer "Len"
 "My salad days; when I was green in judgment."

MANUAL ARTS
 Birthplace: Mount Vernon, Washington.
 Activities: Basketball 1, 2, 3, 4; Football 3, 4; Stage Assistant 1, 2, 3, 4; Stage Manager 1; Baseball Manager 1.

Edwin Stephens "Ed"
 "After I have named the man I need any no more."

SCIENTIFIC
 Birthplace: Ashton, Idaho.
 Activities: Captain Applejack 1; Golden Trail 3; Bulldog Staff 1, 2, 3; Bulldog Business Manager 4; Football 1, 2, 3, 4; Boys' Green "M" 2, 3, 4.

Eleanor Pulliam "Lnor"
 "Thy modesty's a candle to thy merit."

GENERAL BUSINESS
 Birthplace: Mount Vernon, Washington.



Hilryth Swan "Swans Down"
 "To myself alone do I owe my fame."
 AGRICULTURAL

Birthplace: Austin, Texas.
 Activities: Football 2; Boys' Green "M" 2, 3, 4; Stage
 Manager 3, 4; Watchdog for Future Farmers 3, 4;
 Track 1, 2, 3.

Alma Redfern "Red"
 "She is gentle that does gentle deeds."
 STENOGRAPHIC

Birthplace: Chester, Montana.
 Activities: Girls' Glee Club 3, 4; Chorus 2, 3; Library
 Club 4; Hiawatha 2; Duke of Volendam 4.

Dorothea Rose "Dot"
 "She smiles, and she sleeps!"
 HOME ECONOMICS

Birthplace: Shelton, Washington.
 Entered from Port Angeles, 1931.

Lillian Safstrom "Bill"
 "A pleasing countenance is no slight advantage."
 HOME ECONOMICS

Birthplace: Mount Vernon, Washington.
 Activities: Girls' Glee Club 3, 4; Windjammers 4;
 Archery 3, 4; Tennis 2; Duke of Volendam 4.

Norma Sater "Normie"
 "I live and I love."
 ENGLISH

Birthplace: Mount Vernon, Washington.
 Activities: Folk Festival 1; Annual Staff 3, 4; Vice
 President Girls' Club 4; Spanish Club 3, 4; Bull
 Staff 4; Spiz Gang 4.

Eugenia Schultz "Genie"
 "Her pleasant countenance is a joy to all."
 HOME ECONOMICS

Birthplace: Leeds, North Dakota.
 Activities: Honor Society 2, 3; Folk Festival 1; Torch
 Society 4.

Myrtle Schuman "Myrt"
 "The girl that loves and laughs must surely do well."
 STENOGRAPHIC

Birthplace: Minneapolis, Minnesota.
 Activities: Honor Society 2, 3; Folk Festival 1; Torch
 Society 4.

Emil Torrell "Emil"
 "I am very fond of the company of Ladies."
 AGRICULTURAL

Birthplace: Yakima, Washington.
 Activities: Potato Judging Team 3; Golf Team 3; Stock
 Judging Team 4; Windjammers 4; Dramatics Club 4.



Gwendolyn Simmons "Gwen"
 "Her eyes outshine the radiant beams
 that gild the passing shower."
 SCIENTIFIC

Birthplace: Whitman, Nebraska.
 Activities: G. A. A. 1, 2, 3, 4; Manager Baseball 2;
 Girls' Green "M" 3, 4; Windjammers 4; Honor
 Society 2; Folk Festival 1; U. of W Playday 4.

Agnes Sjolseth "Sho-Sho"
 "She's tall and stately as yon youthful ash."
 STENOGRAPHIC

Birthplace: Hoquiam, Washington.
 Activities: Girls' Green "M" 3, 4; Tennis Team 3;
 Girls' Glee Club 4; Archery Manager 4; All Star
 Volleyball Team 2; Captain All Star Service Ball Team 3;
 Glee Club 4; Basketball 1, 2; G. A. A. 1, 2, 3, 4.

Doris Smith "B. G."
 "Her heart is filled with wit and brightness."
 HOME ECONOMICS

Birthplace: Matsqui, British Columbia.
 Activities: Honor Society 2, 3; Torch Society 4; Girls'
 Glee Club 4; Basketball 1, 2; G. A. A. 1, 2, 3, 4;
 Spiz Gang 4; Secretary of French Club 4.

Ladema Spahr "Dema"
 "As for me, all I know is that I know nothing."
 GENERAL BUSINESS

Birthplace: Bellingham, Washington.
 Activities: Entered from Fairhaven, 1929; Spiz Gang
 4; Girls' Glee Club 4.



Richard Watson "Dick"
 "It is easier to know mankind in general than to know man individually."

SCIENTIFIC
 Birthplace: Manila, Philippine Islands.
 Activities: Track 3, 4; Football Manager 1, 2; Track Manager 1, 2; Bulldog 3; Baseball Manager 2.

Iola Steele "Lollie"
 " 'Tis the mind that shines in every grace."

HOME ECONOMICS
 Birthplace: Libby, Montana.
 Activities: Heel and Toe 2, 3, 4; Honor Society 2, 3; Torch Society; Secretary Student Body 4; Orchestra 2, 3, 4; Spanish Club 4; Band Contest 2, 3; Student Council 4; Music Festival 2.

Luella Stewart "Lu"
 "There's sun in her heart."

HOME ECONOMICS
 Birthplace: Mount Vernon, Washington.

Mary Thompson "Tommy"
 "Friends as she, make the world worth while."

ENGLISH
 Birthplace: Mount Vernon, Washington.
 Activities: Annual Staff 1; Vice President Class 3; Inter-school Debate 3; U. of W. Playday 4; Honor Society 2, 3; Spiz Gang 4; Girls' Green "M" 2, 3, 4; Heel and Toe 1, 2, 3, 4.

Marjorie Tillson "Marge"
 "Her winsome smile helps each day to cheer us."

GENERAL BUSINESS
 Birthplace: Edmonton, Alberta.
 Activities: Girls' Chorus 2; Girls' Glee Club 3, 4; Hiawatha 2; Spiz Gang 4; Pirates of Penzance 3; Duke of Volendam 4; Honor Society 2, 3; Torch Society 4.

Elna Trask "Lna"
 "A lover of books and all things learned."

ENGLISH
 Birthplace: Conway, Washington.
 Activities: Heel and Toe 1; Folk Festival 1; Latin Club 3; Honor Society 2, 3; Torch Society 4.

Eleanor Utgaard "Utty"
 "And athletics were first intended for boys."

HOME ECONOMICS
 Birthplace: St. Paul, Minnesota.
 Activities: Girls' Green "M" 2, 3, 4; G. A. A. 1, 2, 3, 4.

Herbert Westlin "Two-Bits"
 "The Jew Apella may believe this, not I."

AGRICULTURAL
 Birthplace: Herdon, Kansas.
 Activities: Stock Judging Team 4; Treasurer of Future Farmers 4; Charter Member F. F. A.; Windjammers 4.

Melvin Whitehead "Mel"
 "I meant to do my sock today."

MANUAL ARTS
 Birthplace: Mount Vernon, Washington.
 Activities: Baseball 2, 3; Boys' Green "M" 2, 3, 4.

Lenore Welch "Nore"
 "Earned in her every ambition."

STENOGRAPHIC
 Birthplace: St. Marys, Missouri.
 Activities: Girls' Chorus 1; Girls' Glee Club 2, 3; Rose Maiden 1; Hiawatha 2; G. A. A. 1, 2; Volley Ball 2; Debate Club 2; Honor Society 2, 3; Torch Society 4; Folk Festival 1.

Gertrude Wells "Gertie"
 "Sincerity is the golden chord of virtue."

HOME ECONOMICS
 Birthplace: Ridgeway, Washington.

Dorothy Vaughan "Dottie"
 "She is a maiden of charming presence with friendly blue eyes."

SCIENTIFIC
 Birthplace: Bellingham, Washington.
 Activities: Chorus 1, 2; Girls' Glee Club 3, 4; G. A. A. 1, 2, 3; Debate Team 2, 3; Pirates of Pen- U. of W. Playday 3; Soccer 2; Windjammers 4; Annual Staff 4.



Helen White "Helen"

"Purposeful but modest—her characterization."

ENGLISH

Birthplace: Mount Vernon, Washington.
Activities: Band 1, 2, 3, 4; Orchestra 2, 3, 4.

Madeline Wilton "Madge"

"Like Minerva, every motion is grace itself."

GENERAL BUSINESS

Birthplace: Mount Vernon, Washington.
Activities: Girls' Green "M" 2, 3, 4; President of Girls' Green "M" 4; Baseball 1, 2, 3; Basketball 1, 2, 3; Volley Ball 2, 3; G. A. A. 2, 3, 4; All Star Soccer Team 3; Captain Ball 2; U. of W. Playday 4; Folk Festival 1.

Elizabeth Wilson "Betty"

"Interest, diligence, modesty, truly, gifts of the gods."

ENGLISH

Birthplace: Mount Vernon, Washington.
Activities: Girls' Glee Club 1, 2, 3, 4; Rose Maiden 1; Hiawatha 2; Duke of Volendam 4; Honor Society 2, 3; Torch Society 4; French Club 3, 4; Debate Club 4; Camera Club 4.

Elsie Yaeger "Elsie"

"She is of pleasant face and gentle manner."

ENGLISH

Birthplace: Minnedosa, Manitoba, Canada.
Activities: Basketball 1, 2; Baseball 1, 2; Volley Ball 2; Spanish Club 3, 4; Spiz Gang 4.

Stewart Setchfield "Setchie"

"Napoleon was misunderstood, too."

GENERAL

Birthplace: Olympia, Washington.
Activities: Entered from Olympia High School, 1931.
Future Farmers 4.

CAMERA SHY

Nadene Carter General Business

Kermit Carlson Scientific



The Historic of The Senior Classe

Ye Seniore Classe enter'd in ye auguste Highe Schoolle onn Septembere fourthe, inn ye yeare of our Lorde, nineteene hundrede & Twentie-eightte, as ye largeste, gayeste, &, withall, moste promisinge Classe thatte ever march'd upp ye steppes to ye Auditorium.

This yeare was nott Uneventfull, beginninge, in ye Autumne, withe a moste bracinge Duckinge frome ye moste highe Sophomores. Yt was itte nott all of Disgrace, for a Classe Partie enliven'd, (butt nott intoxicated,) yet whole of an eveninge.

Under ye experte directione of oure President, Paul Thompson, we didd manage ye persecutionnes of ye wortheie Sophomores, & didd finishe upp ye yeare withe a grande picnic att Similk Beach.

Ye robuste lungges of ye Classe plac'd, as Sophomores, foure of oure nombre onn ye Schoole Debate teammes, wch Circumstance we consider'd moste encouraginge for ye future yearres.

In thatte seconde yeare of oure regime, we didd holde ye Classe Partie, wch was ye laste Classe Partie ever helde bie anie Classe of ye Schoolle.

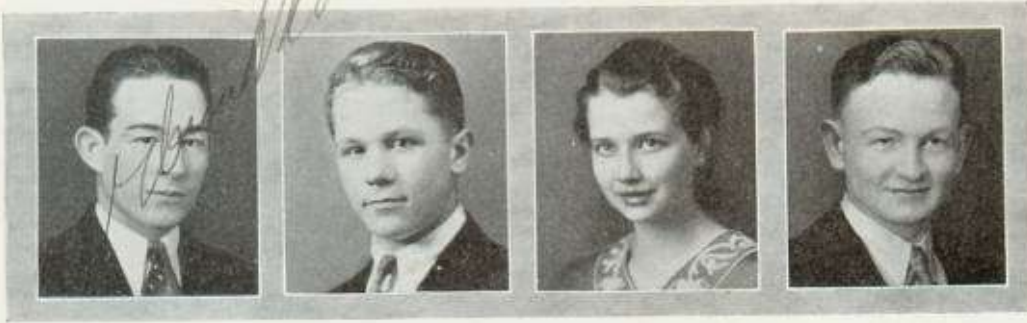
Inn additione to thatte gaie affaire, "Sophomore Nite," in ye Lincoln Theatre didd add to oure peppe & oure Treasurie.

Thatte yeare we didd have representatives inn ye All-Schoolle Plaie, wch behaved themselves verle creditablie & prepared themselves to take a prominent part inn ye Plaies to come.

We didd prove oure steadfastness thatte yeare, when we again chose Paul Thompson to be oure President, before he strove upward & onnward to ye Seniore Classe.

Glenn Monismith

Bob Ruley



Junior Officers

PRESIDENT	- - -	GLENN MONISMITH
VICE-PRESIDENT	-	LEONARD SCHROEDER
SECRETARY	- - -	ELEANORE SMITH
TREASURER	- - - -	ROBERT RULEY

ADVISORS

MISS DOROTHY WELLS	MR. MAURICE WINDUS
--------------------	--------------------

COLORS

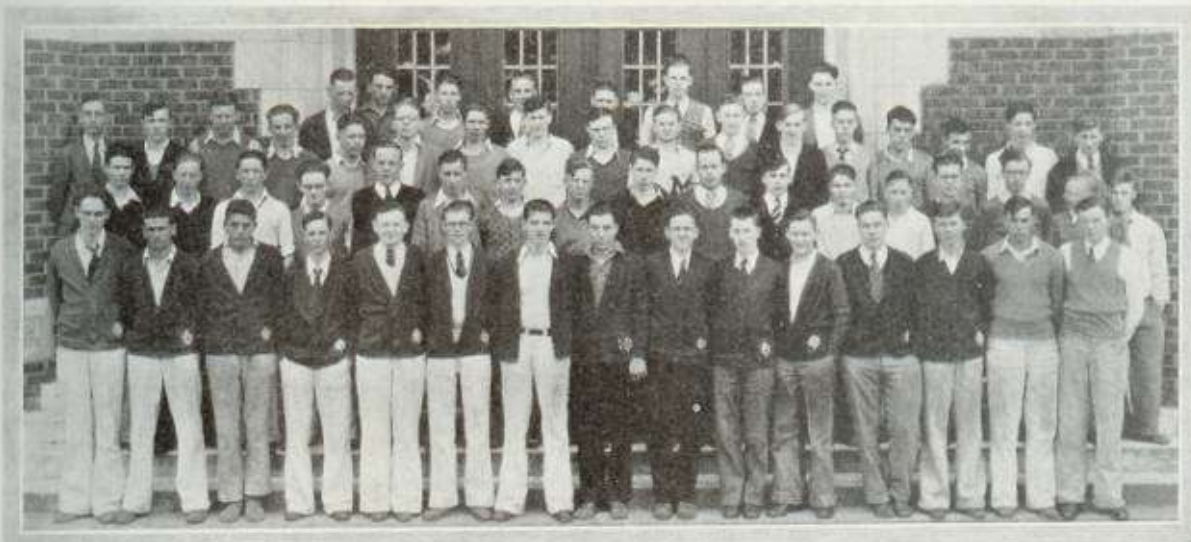
BLUE AND WHITE

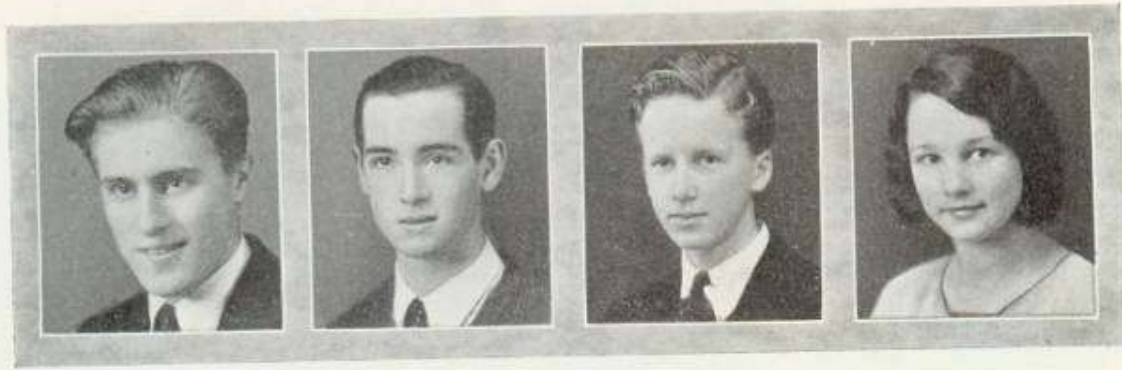
❧ 1933 ❧



TWENTY-EIGHT

Junior Class





PRESIDENT	-	-	-	JACK MILLARD
VICE-PRESIDENT	-	-	-	GEORGE SMITH
SECRETARY	-	-	-	DONALD HAYTON
TREASURER	-	-	-	MAXINE BERGER

ADVISORS

MR. WILLIAM MOORE MISS LENORE SMITH

COLORS

BLACK AND WHITE

FLOWER

WHITE CARNATION

Sophomores

The Sophomores have lost so much of last year's greenish appearance, that we have decided to give you some of the class's general characteristics so you will recognize them and take them for what they are, not mistaking them for Juniors or Seniors!
Just Look for

- Scavoldi's broad grin.
- Jack Chenoweth's chin music.
- Jack Millard's girlish blush.
- Donald Hayton's meek attitude (?).
- Andy's shuffling gait.
- Germ's quaint wisecracks.
- Al's likeness to a walking library.
- Zina's talkative nature.
- Betty Averill's musical talent.
- Kathryn Hammer's vamping ability.
- Frances Hall's musical (?) laugh.
- Audrey Hanson's businesslike manner.
- Elsie Boling's genius at Latin translation.
- Maxine Berger's dramatic powers.

And you will have found the Class of '34.



Sophomore Class





Officers

PRESIDENT	- - -	JOHN MINAHAN
VICE PRESIDENT	- -	BETTY HARRIS
SECRETARY-TREASURER	-	SHIRLEY HAWKINS
ADVISOR	- - -	MISS LAURA ANGST



Freshman Class

WELL LOOK who's here. 180 strong! Yes, right the first time. We are the bright and shining class of '35, but we're not as dumb as we look for 33 per cent of our membership have places on the honor roll. Not so bad for a starter. Even though we did make a few mistakes the first few days, such as imagining the building was in flames when we heard the buzzing of the bell, or insisting on taking choice senior seats in assembly, we want to tell you that we improve with age.

We have to laugh when we think that we tied with our lofty sophomore brethren for third place in the yell contest, but we certainly did show them up in basketball by having one member on the first squad and three men on the second squad.

When it comes to music we are on a par with Beethoven, Rudy Vallee, and Vic Meyers, and we don't mean playing a shoe horn in a rubber band either. Isn't one of the four in the boys' quartet a Freshman, and don't 10 per cent of our number belong to the band or orchestra?

As a last closing flourish in our already shining career we have presented a one act play "The Loan of a Lover" which was adjudged by many as the best of the Four One Act Plays presented by the school. We wouldn't think of giving any credit to the three sophomores and one senior who helped us in this accomplishment.

Thank goodness no one takes us Freshmen seriously or you would think that we have been boasting.



Freshmen

